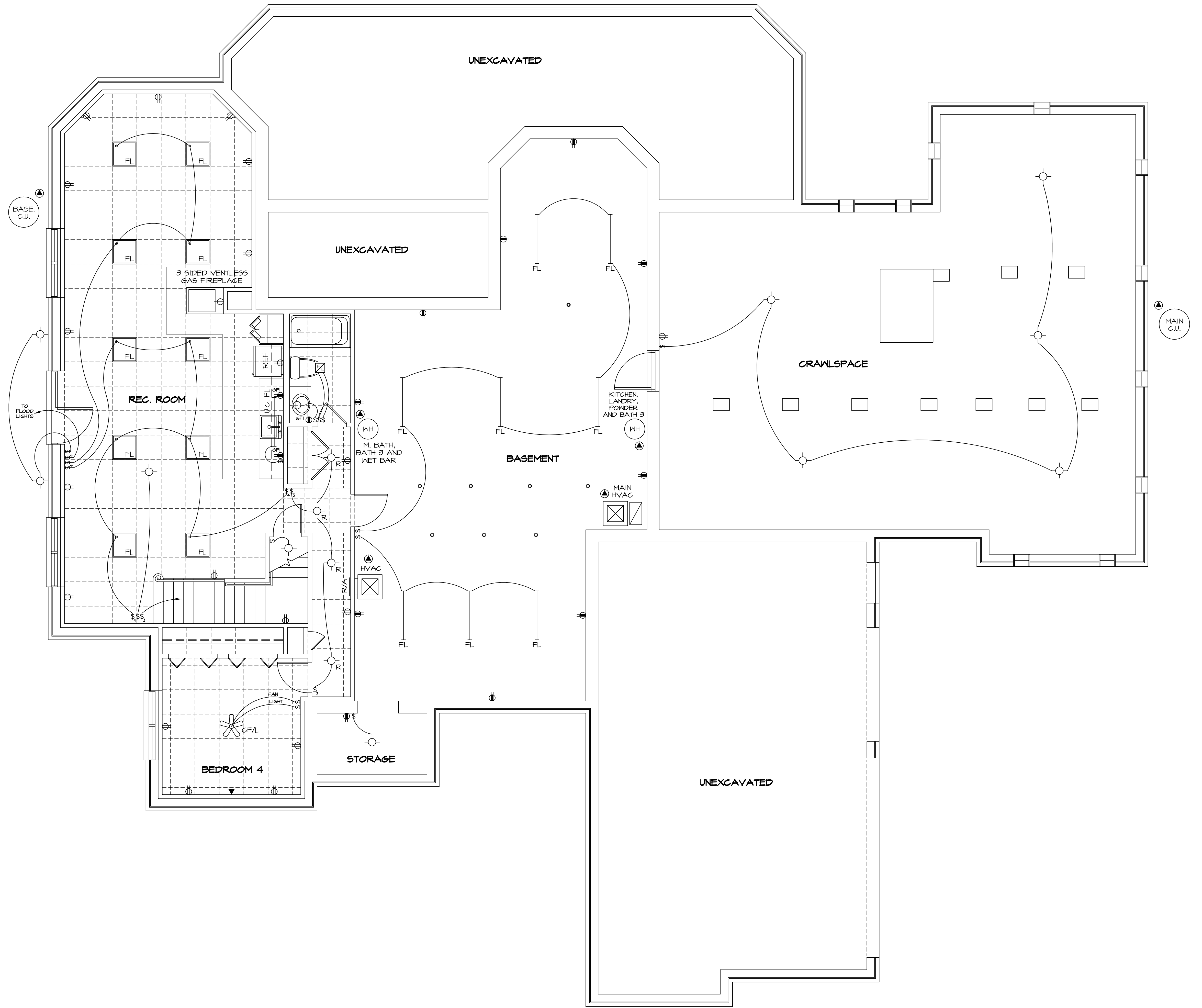


ELECTRICAL SYMBOLS	
	ELECTRIC PANEL
	SINGLE POLE SWITCH, MOUNT 48" A.F.F.
	THREE-WAY SWITCH, MOUNT 48" A.F.F.
	FOUR-WAY SWITCH, MOUNT 48" A.F.F.
	DIMMER SWITCH, MOUNT 48" A.F.F.
	WEATHERPROOF SWITCH, MOUNT 48" A.F.F.
	INCANDESCENT LIGHT
	RECESSED LIGHT
	FLUORESCENT FIXTURE, APPROX. TO SCALE
	TRACK LIGHTING, APPROX. TO SCALE
	EXTERIOR WEATHERPROOF FLOODLIGHT
	CF = CEILING FAN CF/L = CEILING FAN WITH LIGHT
	EXHAUST FAN
	EXHAUST FAN/LIGHT COMBINATION
	DUPLEX RECEPTACLE, MOUNT 18" A.F.F.
	DUPLEX RECEPTACLE, COUNTER HT. OR 48" A.F.F.
	SPLIT WIRED RECEPT. (UPPER OUTLET SWITCHED)
	FLOOR RECEPTACLE
	GROUND FAULT INTERRUPTER RECEPT. OR CIRCUIT
	WEATHERPROOF RECEPT., 18" A.F.F. (OR GRADE)
	TELEPHONE RECEPTACLE, MOUNT 18" A.F.F.
	TELEPHONE RECEPTACLE, MOUNT 48" A.F.F.
	FLOOR TELEPHONE RECEPTACLE
	TELEVISION OUTLET, MOUNT 18" A.F.F.
	DOOR BELL/CHIME
	SMOKE DETECTOR
	RATE-OF-RISE HEAT DETECTOR
	GARAGE DOOR OPERATOR PUSH-BUTTON
	SPECIAL OUTLET OR EQUIPMENT CONNECTION
	CLOTHES DRYER
	CONDENSER UNIT
	COOKTOP
	ELECTRIC WATER HEATER
	HEAT/VENTILATION/AC AIR HANDLER
	OVENS
	RANGE
	WATER HEATER
	ETC.



GROUND-FAULT PROTECTION NOTE
 PROVIDE GROUND-FAULT CIRCUIT INTERRUPTER PROTECTION AS FOLLOWS:
 1. ALL BATHROOM RECEPTACLES.
 2. ALL GARAGE RECEPTACLES.
 3. ALL EXTERIOR RECEPTACLES.
 4. ALL RECEPTACLES IN UNFINISHED BASEMENT AREAS, UNLESS RECEPTACLE IS ON A DEDICATED CIRCUIT (SUCH AS FOR A FREEZER) OR IS ON A REQUIRED LAUNDRY CIRCUIT.
 5. ALL KITCHEN COUNTER RECEPTACLES WITHIN 6 FEET OF A SINK.